



- Pro-Key Cylinders
- Side Bar Cylinders
- 6 pin Cylinders
- 5 Pin Cylinders
- Security Roses

Cylinders

Cylinders

Yale[®]

Cylinders Index

- Introduction C2
- BSEN1303 Classification C3
- Features and Functions C3
- Photo Gallery C4
- Range Table C5
- Euro Profile Cylinders C6
 - Single Cylinders
 - Double Cylinders
 - Turn & Key Cylinders
- Oval Profile Cylinders C7
 - Single Cylinders
 - Double Cylinders
 - Turn & Key Cylinders
- Rim Cylinders C8
- Mortice Screw in Cylinders C8
- Scandinavian Cylinders C9
 - Inner Cylinder
 - Outer Cylinder
- Security Escutcheons C9
- Product Information Table C10
- Notes C11

Note: We have made every effort to ensure that at the time of going to print all information shown in this catalogue is correct. However, in our efforts to continually improve our products and offer only the highest levels of security and quality we reserve the right to make alterations to the product specifications shown in this catalogue. All dimensions provided within this catalogue are approximate and for guidance only.

Introduction

Yale offers a very comprehensive range of cylinders to suit most applications. They are available in the most common styles to enable the customer to utilise their existing ironmongery.

The patent protection on the new Pro-Key system will help secure your suite from illicit key duplication. The Pro-Key, Side Bar and 6 Pin systems are fully supported by our national Field Service Network to guarantee the best service and support.

For the most comprehensive and flexible range of cylinders, Yale has the solution.



Yale is accredited with and meets the requirements of BS EN ISO 9001: 1994.

Keying Groups

Throughout the catalogue you will see a column headed.



The information shown under this heading can help you identify which products can be Keyed Alike or Masterkeyed.

The products that can be keyed to work with other products are given a group code.

KA - means the product can be Keyed Alike with more of the same product.

MK - means the product can be Masterkeyed with more of the same product.

A Group Letter (eg A) means the product can be Keyed Alike or Masterkeyed with more of the same product and with other products listed in the same group.

For the complete range of products and their keying groups, see the chart in the introduction section.

Keys

2 keys are supplied as standard, however see the price list for any variations.

How to Specify

Yale have developed a series of icons to enable the process of product specification to be simplified.

From today you can specifically detail your requirements for a product, therefore ensuring that it includes particular security features.

Example: If you require a cylinder that is Drill Resistant look for the Drill icon (2) in the range table.

Yale, Simplifying the Specification Process.

Standards & Approvals



These pan-European standards classify products into grades on a series of exacting tests.



The Association of British Insurers provides minimum security recommendations for external doors and windows.



Security Features

- 1 **Protected Section**
Products are available as an option on a patented key section.
- 2 **Drill Resistant**
Hardened protection against drill attack.
- 3 **Saw Resistant**
Hardened protection against saw attack.
- 4 **Force Resistant**
Built in strength against force attack.
- 5 **Pick Resistant**
Built in protection to resist picking.
- 6 **Torque Resistant**
Built in strength against torque attack.
- 7 **Tamper Resistant**
Built in protection against Tampering.
- 8 **Corrosion Resistant**
Products conform to appropriate anti-corrosion requirements.
- 9 **Fire Resistant**
Products conform to appropriate fire test requirements.
- 10 **Escape**
Products for use on an escape door.
- 11 **Key Control**
The products can be included in a key control system.
- 12 **Guarantee**
Products are guaranteed for a period of time.

BSEN1303 Classification

This standard classifies cylinders using a 7 digit coding system. Each digit refers to a particular feature of the product measured against the standard's performance requirements.

- Digit 1 - Category of use**
 - grade 1: Suitable for use at extremes of temperature - 20°C to +80°C.
- Digit 2 - Durability**
 - grade 4: 25 000 cycles completed.
 - grade 5: 50 000 cycles completed.
 - grade 6: 100 000 cycles completed.
- Digit 3 - Door mass**
 - No requirement.
- Digit 4 - Fire resistance**
 - grade 0: No requirement.
 - grade 1: Cylinders shall be fire tested in accordance with current fire test requirements of prEN 1634-1.
- Digit 5 - Safety**
 - No requirement.
- Digit 6 - Corrosion resistance**
 - grade 0: No requirement.
 - grade 1: Conforms to grade 3 of BS EN 1670 as a minimum.
- Digit 7 - Security**
 - Cylinders will be classified in grades 1 to 5, where 5 is the highest. The grade of security can differ from one side of a double cylinder to the other.

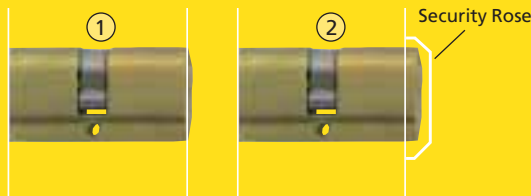
	Grades				
	1	2	3	4	5
Min. no. of effective differs	100	300	15 000	30 000	100 000
Min. no. of movable pins	2	3	5	6	6
Direct coding on key	YES	YES	NO	NO	NO
Max. net drill time (mins.)	-	-	-	3	5
Total drill test time (mins)	-	-	-	5	10
* Chisel attack resistance (No. of blows)	-	-	-	30	40
Cylinder extraction resistance	-	-	-	15kN	15kN
* Cylinder torque resistance (Nm)	2.5	5	15	20	30

Example

The following marking denotes a cylinder meeting the required category of use, durability grade 6 (100 000 cycles) with no fire resistance requirement, grade 1 corrosion resistance and grade 4 security.

1 6 - 0 - 1 4

* **Note:** To gain chisel or torque resistance it is important that either, (1) the correct length of cylinder used is to be flush with the door/handle face OR (2) a high security rose is used to cover any cylinder protrusion.



Features and Functions

Adjustable Cam

The Pro-Key Euro Single cylinder has an adjustable cam which can easily be set to one of eight positions

Retaining Screw Anti Drill

The Pro-Key Rim cylinder has hardened anti-drill plates positioned in front of the two retaining screws which prevent drilling out of the rim cylinder retaining screws from the outside.



Products have been tested to BSEN1303 and graded.



Products meet the minimum ABI security recommendations.

Key Systems



PRO-KEY

Newly patented High Security locking system. The system operates on 7 pins in the cylinder, one of which interacts with a pin fitted in key.



SIDE BAR

A high security patented locking system incorporating a special side bar mechanism within an enhanced 6 pin tumbler cylinder.



5 & 6 PIN

Convenient system for commercial & residential applications. System operates on a row of five or six lateral pins.



Protected Section
Available on a patented key section.



Drill Resistant
Hardened Steel Inserts in the cylinder body and plug.



Force Resistant
Security roses or correct length cylinders prevent force attacks.



Pick Resistant
Mushroom pins in the cylinder inhibit picking.



Torque Resistant
Security roses or correct length cylinders prevent twisting.



Corrosion Resistant
Products have successfully completed an anti-corrosion test.



Key Control
Cylinders using the same key systems can be supplied Keyed Alike, or Masterkeyed.



Guarantee
Guarantee period applicable when used with original Yale keys and maintenance instructions followed.

Combi System

The Sidebar and 6 Pin mechanisms can be combined to create a masterkey suite of High and Standard security cylinders. The Sidebar keys will work the lower level 6 Pin cylinders but the 6 Pin keys will not enter the Sidebar cylinders. This is ideal for upgrading existing Yale 6 pin suites and to create a cost effective mix of security levels.

Finishes: Brass Satin Nickel Satin Chrome

Ideal for Use with: Rim Locks, Mortice Locks, Access Control, Panic Hardware, Multipoint Locks.



Cylinders

Euro Profile Cylinders



Yale Euro Single Cylinder Page C6



Yale Euro Double Cylinder Page C6



Yale Euro Key and Turn Cylinder Page C6

Rim Cylinders



Yale PK1109 Page C8

Oval Profile Cylinders



Yale Oval Single Cylinder Page C7



Yale Oval Double Cylinder Page C7



Yale Oval Key and Turn Cylinder Page C7

Rim Cylinders



Yale 1109 Page C8

Screw In Cylinders



Yale PK1133 Page C8

Scandinavian Oval Cylinders



Yale PKSCI Page C9



Yale PKSCO Page C9

Security Escutcheons



Yale SE3000 Page C9



Yale Y300TSE Page C9

Yale®

Cylinders

Yale Euro Profile Cylinders*

	Standards		Security Features								Key Systems				Features & Functions				Finish Options		
	ABI	GEN	Protected Section	Drill Resistant	Force Resistant	Pick Resistant	Torque Resistant	Corrosion Resistant	Key Control	Guarantee	5 Pin	6 Pin	Side Bar	Pro-Key	Paracentric Keyway	Std. Cam Position	Other	Combi System	Brass	Satin Nickel	Satin Chrome
Euro Single Cylinder (5 Pin)											1					30°			1	1	
Euro Single Cylinder (6 Pin/Side Bar)	O		O	O	O	1	1	1	B	10		1	1			30°		1	1	1	
PKES Euro Single Cylinder (Pro-Key)	1	116-0-115	1	1	1	1	1	1	A	10				1	1	30°	AC		1	1	
Euro Double Cylinder (5 Pin)											1					30°			1	1	
Euro Double Cylinder (6 Pin/Side Bar)	O		O	O	O	1	1	1	B	10		1	1			30°		1	1	1	
PKED Euro Double Cylinder (Pro-Key)	1	116-0-115	1	1	1	1	1	1	A	10				1	1	30°			1	1	
Euro Key and Turn Cylinder (5 Pin)											1					30°			1	1	
Euro Key and Turn Cylinder (6 Pin/Side Bar)	O		O	O	O	1	1	1	B	10		1	1			30°		1	1	1	
PKET Euro Key and Turn Cylinder (Pro-Key)	1	116-0-115	1	1	1	1	1	1	A	10				1	1	30°			1	1	

Yale Oval Profile Cylinders*

PKOS Oval Single Cylinder	1	116-0-115	1	1	1	1	1	1	A	10				1	1	30°			1	1	
PKOD Oval Double Cylinder	1	116-0-115	1	1	1	1	1	1	A	10				1	1	30°			1	1	
PKOT Oval Key and Turn Cylinder	1	116-0-115	1	1	1	1	1	1	A	10				1	1	30°			1	1	

Yale Rim Cylinders

1109 (5 Pin)											1								1	1	
1109 (6 Pin/Side Bar)	O		O	O	O	1	1	1	B	10		1	1					1	1	1	
PK1109 (Pro-Key)	1	116-0-115	1	1	1	1	1	1	A	10				1	1		RSAD		1	1	

Yale Mortice Screw-in Cylinders

1122 (5 Pin)											1								1	1	
1122 (6 Pin/Side Bar)	O		O	O	O	1	1	1	B	10		1	1					1	1	1	
1133 (5 Pin)											1								1	1	
1133 (6 Pin/Side Bar)	O		O	O	O	1	1	1	B	10		1	1					1	1	1	
1144 (5 Pin)											1								1	1	
1144 (6 Pin/Side Bar)	O		O	O	O	1	1	1	B	10		1	1					1	1	1	
PK1133 (Pro-Key)	1	116-0-115	1	1	1	1	1	1	A	10				1	1				1	1	

Yale Scandinavian Oval Cylinders

PKSCI25 (Pro-Key)	1	116-0-115	1	1	1	1	1	1	A	10				1	1				1	1	
PKSC025 (Pro-Key)	1	116-0-115	1	1	1	1	1	1	A	10				1	1				1	1	
PKSCI30 (Pro-Key)	1	116-0-115	1	1	1	1	1	1	A	10				1	1				1	1	
PKSC030 (Pro-Key)	1	116-0-115	1	1	1	1	1	1	A	10				1	1				1	1	

Key: RSAD = Retaining Screw Anti-Drill

AC = Adjustable Cam

O = Available in High Security Side Bar Variant only

* See product information tables for details of list numbers and length variations.

Euro Profile Single Cylinders

Yale See product information tables for details of list numbers and length variations.

- For use with Euro profile lock cases.
- Gives key access from one side of a door.



Euro Profile Double Cylinders

Yale See product information tables for details of list numbers and length variations.

- For use with Euro profile lock cases.
- Gives key access from both sides of a door.



Euro Profile Key & Turn Cylinders

Yale See product information tables for details of list numbers and length variations.

- For use with Euro profile lock cases.
- Gives key access from one side of a door and thumbturn operation from the other.

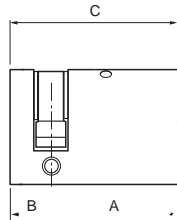


	Euro Single				Euro Double				Euro Turn						
	5	6	SB	PK	5	6	SB	PK	5	6	SB	PK			
Security Features															
Protected Section			•	•					•	•			•	•	
Drill Resistant			•	•					•	•			•	•	
Force Resistant			•	•					•	•			•	•	
Pick Resistant		•	•	•		•	•	•	•	•	•	•	•	•	
Torque Resistant	•	•	•	•	•	•	•	•	•	•	•	•	•	•	
Corrosion Resistant	•	•	•	•	•	•	•	•	•	•	•	•	•	•	
Key Control	C	B	B	A	C	B	B	A	C	B	B	A	C	B	A
Guarantee	10	10	10	10	10	10	10	10	10	10	10	10	10	10	10
Key Systems															
5 Pin		•					•				•				
6 Pin			•				•				•				
Side Bar			•				•				•				
Pro-Key				•				•				•			•
Features & Functions															
Paracentric Keyway								•					•		•
Std. Cam Position	30P	30P	30P	30P	30P	30P	30P	30P	30P	30P	30P	30P	30P	30P	30P
Other								AC							
Combi System			•						•					•	
Finish Options															
Brass	•	•	•	•	•	•	•	•	•	•	•	•	•	•	•
Satin Nickel	•	•	•	•	•	•	•	•	•	•	•	•	•	•	•
Satin Chrome															

Oval Profile Single Cylinders

Yale PKOS

- For use with Oval profile lock cases.
- Gives key access from one side of a door.

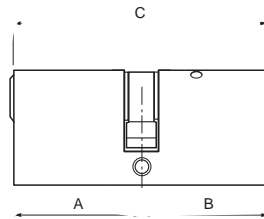


Model	Pro-Key	A	B	C
PKOS3010	1	30	10	40
PKOS3510	1	35	10	45
PKOS4010	1	40	10	50
PKOS4510	1	45	10	55

Oval Profile Double Cylinders

Yale PKOD

- For use with Oval profile lock cases.
- Gives key access from both sides of a door.

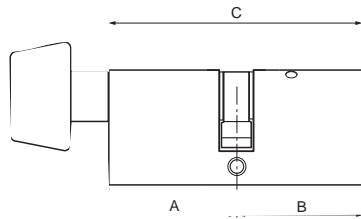


Model	Pro-Key	A	B	C
PKOD3030	1	30	30	60
PKOD3535	1	35	35	70
PKOD4040	1	40	40	80
PKOD4545	1	45	45	90

Oval Profile Key & Turn Cylinders

Yale PKOT

- For use with Oval profile lock cases.
- Gives key access from one side of a door and thumbturn operation from the other.



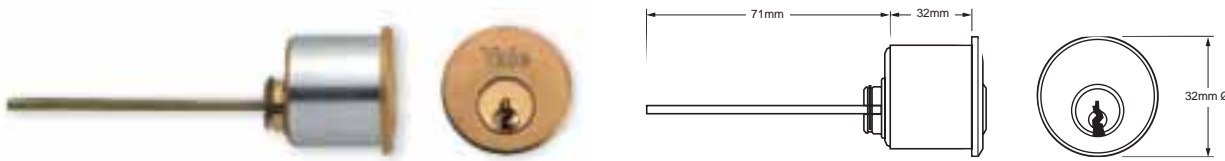
Model	Pro-Key	A	B	C
PKOT3030	1	30	30	60
PKOT3535	1	35	35	70
PKOT4040	1	40	40	80
PKOT4545	1	45	45	90

	Oval Single PK	Oval Double PK	Oval Turn PK
Security Features			
Protected Section	1	1	1
Drill Resistant	1	1	1
Force Resistant	1	1	1
Pick Resistant	1	1	1
Torque Resistant	1	1	1
Corrosion Resistant	1	1	1
Key Control	A	A	A
Guarantee	10	10	10
Key Systems			
5 Pin			
6 Pin			
Side Bar			
Pro-Key	1	1	1
Features & Functions			
Paracentric Keyway	1	1	1
Std. Cam Position	30P	30P	30P
Other			
Combi System			
Finish Options			
Brass	1	1	1
Satin Nickel	1	1	1
Satin Chrome			

Rim Cylinders

Yale PK1109

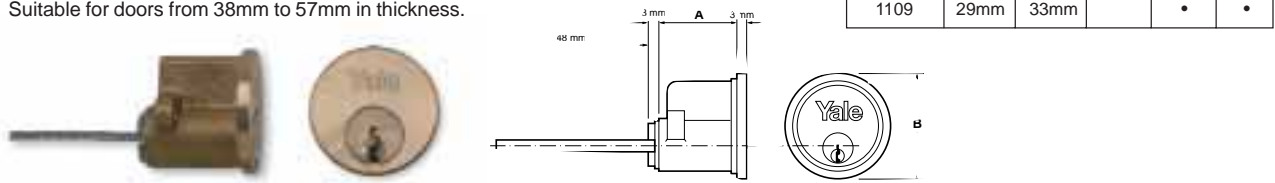
- For use with surface mounted locks operating from a tailbar.
- Provide key access from one side of a door.
- Suitable for doors from 38mm to 57mm in thickness.



Rim Cylinders

Yale 1109

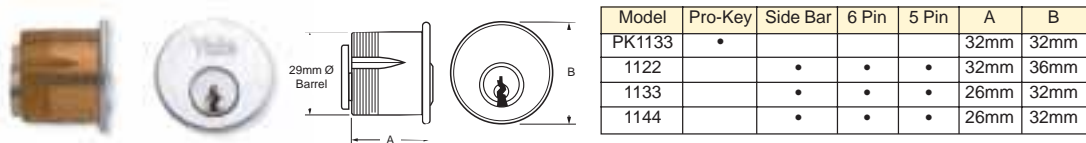
- For use with surface mounted locks operating from a tailbar.
- Provide key access from one side of a door.
- Suitable for doors from 38mm to 57mm in thickness.



Mortice Screw in Cylinders

Yale PK1133 • 1122 • 1133 • 1144

- PK1133 for use with American stile or narrow stile mortice locks operating from a 29mm threaded cylinder.
- Provide key access from one side of a door.
- 1122 for use with original 6000 series Yale locks.
- 1133 for use with narrow stile mortice locks.
- 1144 for use with 4700 series Yale mortice locks.



1109-5 (1109-6) PK1109 1122-5 (1122-6) 1133-5 (1133-6) 1144-5 (1144-6) PK1133

Security Features

Security Feature	1109-5 (1109-6)	PK1109	1122-5 (1122-6)	1133-5 (1133-6)	1144-5 (1144-6)	PK1133
Protected Section	— (O)	•	— (O)	— (O)	— (O)	•
Drill Resistant	— (O)	•	— (O)	— (O)	— (O)	•
Force Resistant	— (O)	•	— (O)	— (O)	— (O)	•
Pick Resistant	— (●)	•	— (●)	— (●)	— (●)	•
Torque Resistant	•	•	•	•	•	•
Corrosion Resistant	•	•	•	•	•	•
Key Control	C (B)	A	C (B)	C (B)	C (B)	A
Guarantee	10	10	10	10	10	10

Key Systems

5 Pin	•	•	•	•	•	•
6 Pin	— (●)	— (●)	— (●)	— (●)	— (●)	— (●)
Side Bar	— (●)	— (●)	— (●)	— (●)	— (●)	— (●)
Pro-Key		•				•

Features & Functions

Paracentric Keyway		•				•
Std. Cam Position						
Other						
Combi System	— (●)	— (●)	— (●)	— (●)	— (●)	— (●)

Finish Options

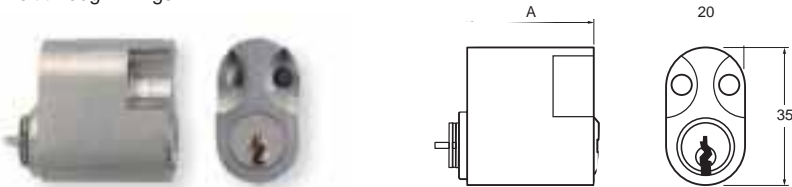
Brass	•	•	•	•	•	•
Satin Nickel		•				•
Satin Chrome	•		•	•	•	•

Scandinavian Oval Cylinders

Yale PKSCI

- For use with Scandinavian oval profile lock cases.
- Provides key access from the inside of a door.
- Bolt through fixings.

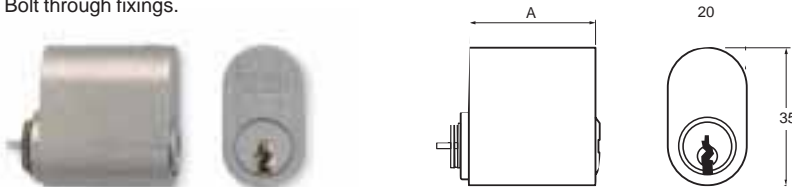
LIST No.	LENGTH A
PKSCI25	25
PKSCI30	30



Yale PKSCO

- For use with Scandinavian oval profile lock cases.
- Provides key access from the outside of the door.
- Bolt through fixings.

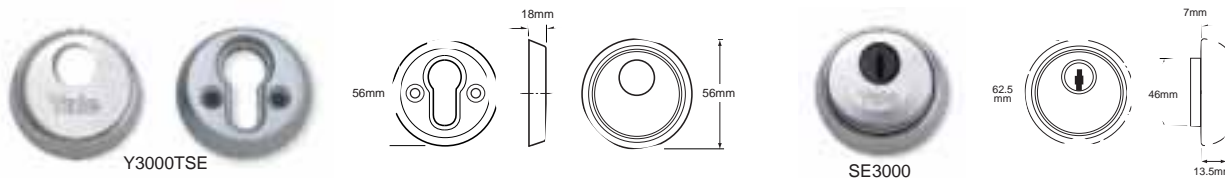
LIST No.	LENGTH A
PKSCO25	25
PKSCO30	30



High Security Cylinder Escutcheons

Yale Y300TSE • SE3000

- For use with Euro profile cylinders.
- Helps prevent against Torque and Force attacks.
- Brass or Satin Finish.
- Bolt through fixing.
- Escutcheon covers cylinder for extra protection.



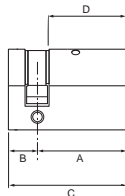
	PKSCI	PKSCO	
Security Features			
Protected Section	1	1	
Drill Resistant	1	1	
Force Resistant	1	1	
Pick Resistant	1	1	
Torque Resistant	1	1	
Corrosion Resistant	1	1	
Key Control	A	A	
Guarantee	10	10	
Key Systems			
5 Pin			
6 Pin			
Side Bar			
Pro-Key	1	1	
Features & Functions			
Paracentric Keyway	1	1	
Std. Cam Position			
Other			
Combi System			
Finish Options			
Brass	1	1	
Satin Nickel	1	1	
Satin Chrome			

Product Information Tables (for page C6)

Yale Euro Profile Cylinders

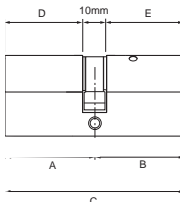
Euro Single Cylinders

Model	Pro-Key	Side Bar	6 Pin M/Key	5 Pin	A	B	C	D
PKES3010	*				30mm	10mm	40mm	25mm
10026				*	31mm	9mm	40mm	26mm
10028				*	33mm	9mm	42mm	28mm
PKES3510	*			*	35mm	10mm	45mm	30mm
10030		*	*	*	37mm	9mm	46mm	30mm
PKES4010	*			*	40mm	10mm	50mm	35mm
10035		*	*	*	41mm	9mm	50mm	34mm
10040		*	*	*	45mm	9mm	54mm	38mm
PKES4510	*			*	45mm	10mm	55mm	40mm



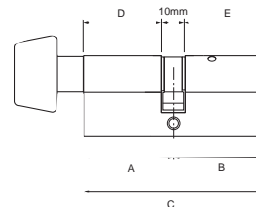
Euro Double Cylinders

Model	Pro-Key	Side Bar	6 Pin M/Key	5 Pin	A	B	C	D	E
22222				*	28mm	28mm	56mm	23mm	23mm
PKED3030	*			*	30mm	30mm	60mm	25mm	25mm
22626				*	31mm	31mm	62mm	26mm	26mm
22828				*	33mm	33mm	66mm	28mm	28mm
PKED3535	*			*	35mm	35mm	70mm	30mm	30mm
23030		*	*	*	37mm	37mm	74mm	32mm	32mm
23035		*	*	*	37mm	41mm	78mm	32mm	36mm
PKED4040	*			*	40mm	40mm	80mm	35mm	35mm
23535		*	*	*	41mm	41mm	82mm	36mm	36mm
23040		*	*	*	37mm	45mm	82mm	32mm	40mm
23540		*	*	*	41mm	45mm	86mm	36mm	40mm
PKED4545	*			*	45mm	45mm	90mm	40mm	40mm
24040		*	*	*	45mm	45mm	90mm	40mm	40mm



Euro Turn & Key Cylinders

Model	Pro-Key	Side Bar	6 Pin M/Key	5 Pin	A	B	C	D	E
PKET3030	*			*	30mm	30mm	60mm	25mm	25mm
32626				*	31mm	31mm	62mm	26mm	26mm
32828				*	33mm	33mm	66mm	28mm	28mm
PKET3535	*			*	35mm	35mm	70mm	30mm	30mm
33030		*	*	*	37mm	37mm	74mm	32mm	32mm
33035		*	*	*	37mm	41mm	78mm	32mm	36mm
33530		*	*	*	41mm	37mm	78mm	36mm	32mm
PKET4040	*			*	40mm	40mm	80mm	35mm	35mm
33535		*	*	*	41mm	41mm	82mm	36mm	36mm
33040		*	*	*	37mm	45mm	82mm	32mm	40mm
34030		*	*	*	45mm	37mm	82mm	40mm	32mm
33540		*	*	*	41mm	45mm	86mm	36mm	40mm
34035		*	*	*	45mm	41mm	86mm	40mm	36mm
PKET4545	*			*	45mm	45mm	90mm	40mm	40mm
34040		*	*	*	45mm	45mm	90mm	40mm	40mm



NOTE: Dimensions shown in mm (rounded to the nearest whole number for guidance only).